



METROPOLITAN  
POLICE

TOTAL POLICING

**Haringey**  
LONDON

# Scrutiny Performance Overview

Sandeep Broca

October 2016

# Performance Overview



**METROPOLITAN  
POLICE**

TOTAL POLICING



- MOPAC7 targets officially came to an end as of April 2016 – currently awaiting new measures to be outlined by Mayor
- MOPAC7 overall reduction of 19.5% achieved against 4 year 20% reduction target
- More focus will now be on Domestic Abuse, Youth Violence and Vulnerability, whilst balancing response to volume crime

<b>MOPAC 7 (Data to September 2016)</b>			
<b>Crime Type</b>	<b>Previous 12-Months</b>	<b>Current 12-Months</b>	<b>Haringey % Change 12-Months</b>
Burglary	2,667	2,439	-8.5%
Criminal Damage	2,165	2,234	+3.2%
Robbery	1,222	1,208	-1.1%
Theft from M/V	1,804	1,804	0.0%
Theft of M/V	787	870	+10.5%
Theft from Person	1,214	1,728	+42.3%
Violence with Injury	2,674	2,955	+10.5%
<b>MOPAC 7 Total</b>	<b>12,533</b>	<b>13,238</b>	<b>+5.6%</b>

# Hate Crime



METROPOLITAN  
POLICE

TOTAL POLICING

**Haringey**  
LONDON

- There has been a London wide trend of increased reports of hate crime over the past year.
- Haringey has experienced an increase of +38% in hate crime reports in the 12 months to July 2016. London as a whole has seen an increase of +18%

	Haringey August 2014 – July 2015	Haringey August 2015 – July 2016	Haringey Change %	London Change %
<b>Racist &amp; Religious Hate Crime</b>	423	576	+36.2%	+18.7%
<b>Homophobic Hate Crime</b>	48	76	+58.3%	+15.5%
<b>Anti-Semitic Hate Crime</b>	27	33	+22.2%	-7.0%
<b>Islamophobic Hate Crime</b>	18	48	+166.7%	+60.9%

# Domestic Abuse



METROPOLITAN  
POLICE

TOTAL POLICING

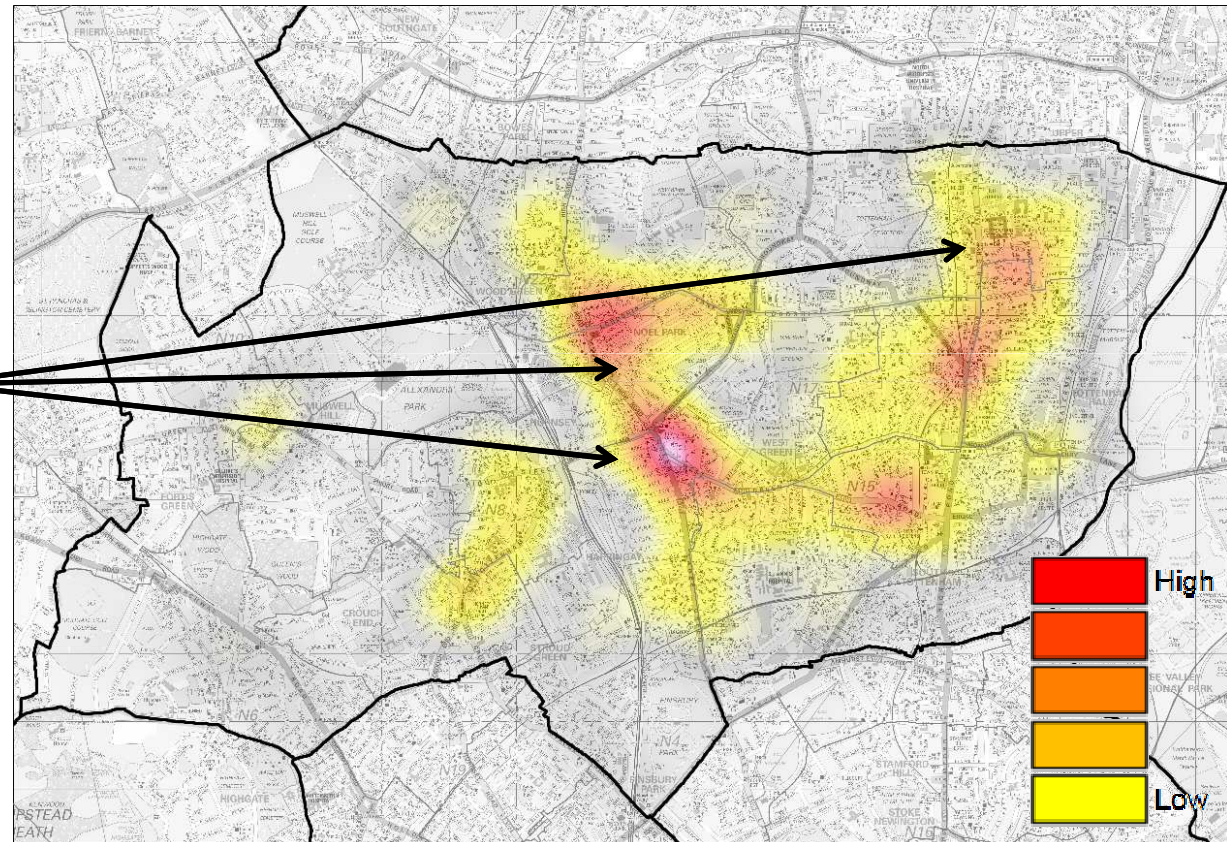
**Haringey**  
LONDON

## Violence With Injury (VWI) Offences

▪ 18% increase in Domestic Abuse VWI offences in the past 12 months in Haringey, compared to a 4% increase for London.

▪ Offending takes place primarily in residential locations, with hotspots in Turnpike Lane, Wood Green and Bruce Grove.

▪ Almost 75% of all Domestic Abuse VWI occurs to the East of the borough.



# Non Domestic Violence with Injury



METROPOLITAN  
POLICE

TOTAL POLICING

**Haringey**  
LONDON



- Currently at +7.2% (130 more offences) up to September, as compared to the previous 12 months for Haringey.
- London is currently at +5.6% over the same period.
- Offences mainly occur in busy shopping locations, transport hubs and key thoroughfares.
- Some incidents are linked to retail/night time economy related issues, including when individuals have been refused entry to shops or bars/pubs and subsequently attacking staff/security.

# Knife-Enabled Crime



METROPOLITAN  
POLICE

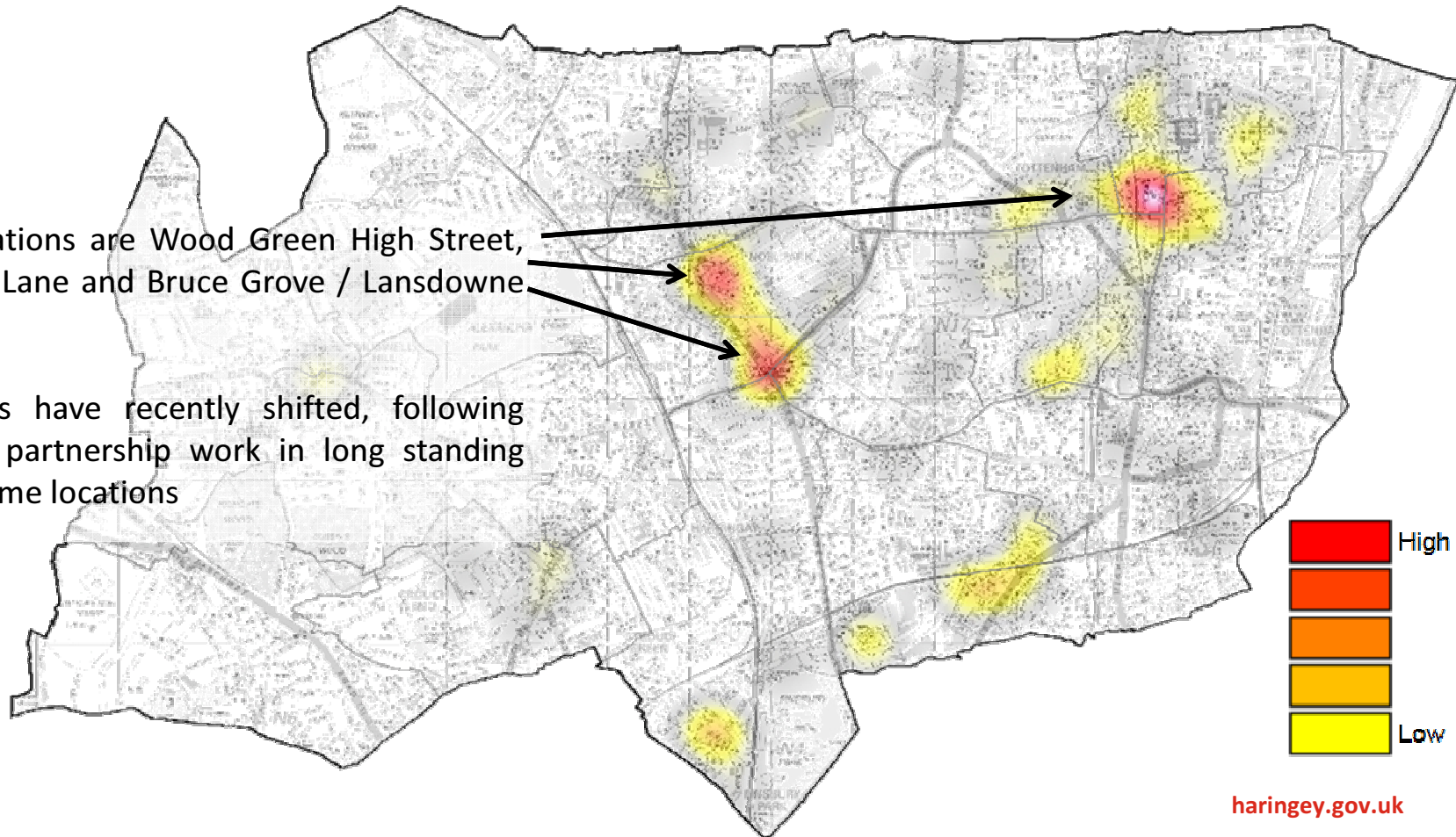
TOTAL POLICING

**Haringey**  
LONDON

- Knife-enabled offending has experienced an increase across Haringey in recent months and is a contributor to both Violence and Robbery.
- Of particular note, knife injury victims aged under 25 (excluding domestic offences) have increased in the past 12 months by +15.2% (12 more offences) compared to +4.3% for London.

▪ Key locations are Wood Green High Street, Turnpike Lane and Bruce Grove / Lansdowne Road

▪ Hotspots have recently shifted, following targeted partnership work in long standing high volume locations



# Gangs and Serious Youth Violence



METROPOLITAN  
POLICE

TOTAL POLICING

**Haringey**  
LONDON

- **327** victims of Serious Youth Violence (SYV) across Haringey in the 12 months to August 2016. This represents an increase of **5%** as compared to the previous year.
- **83** of these offences have been classified as ‘Gang Related’.
- Gang and youth violence has become more widely spread across the borough in recent months, with less clustering.

▪ A number of chain snatches and moped/bicycle enabled robberies have taken place around the N17 area and Wood Green High Road. The volume of these offences appears to now be reducing



# Gang Cross-Border Issues

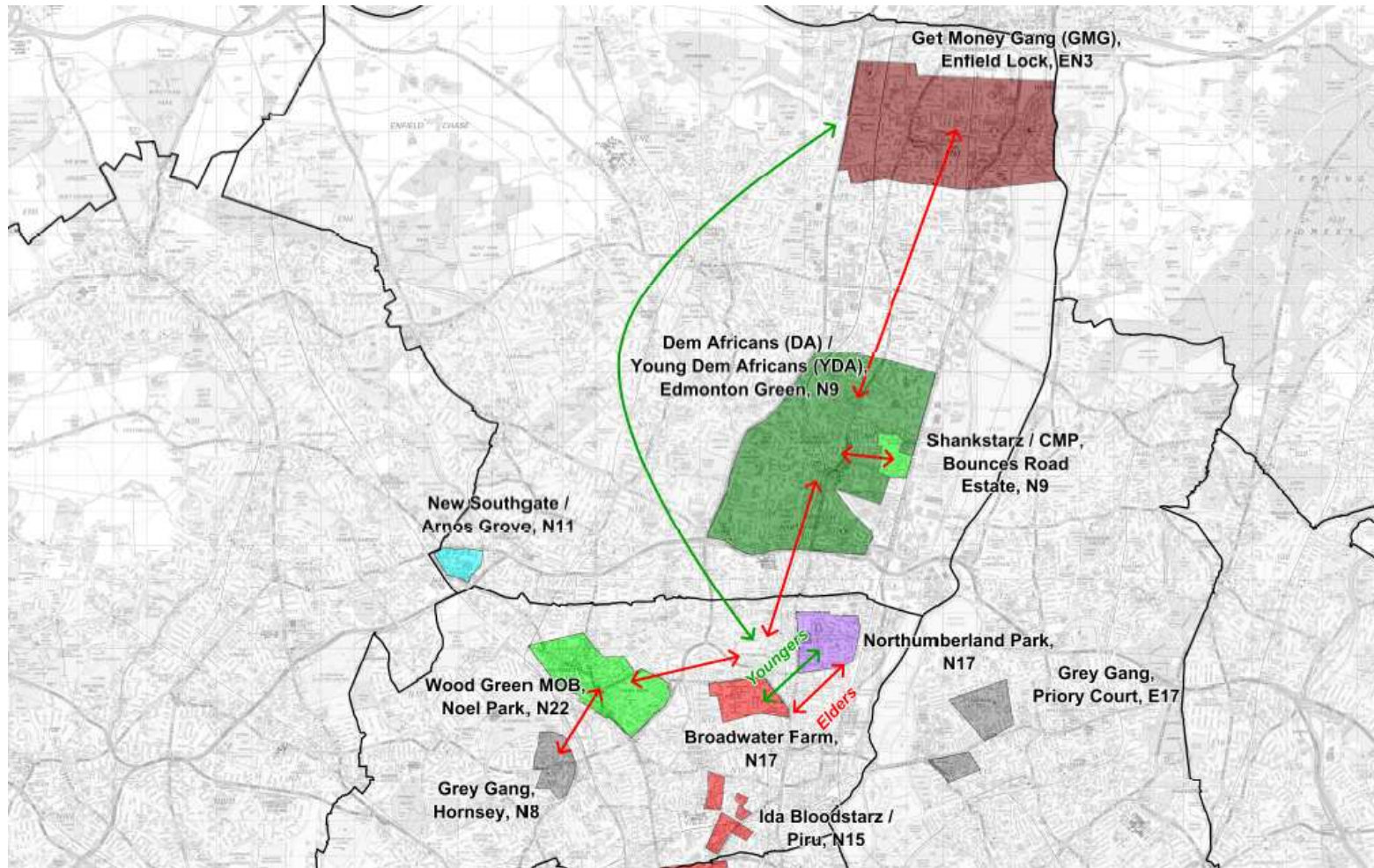


METROPOLITAN  
POLICE

TOTAL POLICING

**Haringey**  
LONDON

- Ongoing cross-border gang issues between Enfield and Haringey youths, which has been the driver for a number of violence incidents.
- Partnership work continues in conjunction with Enfield to jointly tackle the issues.



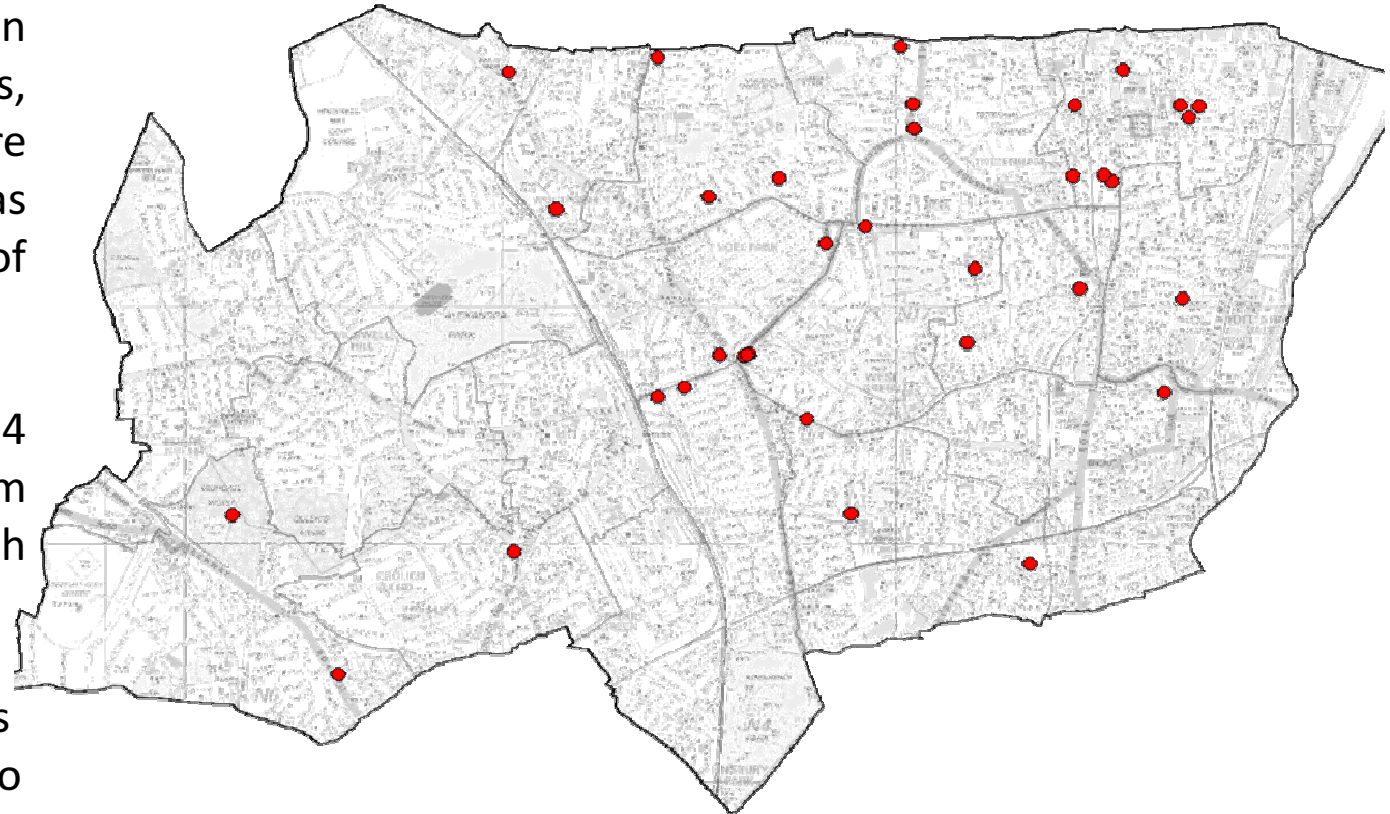


# Firearms

■ There has been an increase in gun crime across Haringey of 33% in the past 12 months, representing 29 more offences. London has experienced an increase of 10% over this period.

■ There have been 14 recorded firearm discharges in the borough in the past year

■ Firearm related incidents occur almost exclusively to the East of the borough, and show some correlation with known gang linked areas.



# Firearms

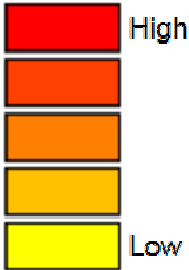
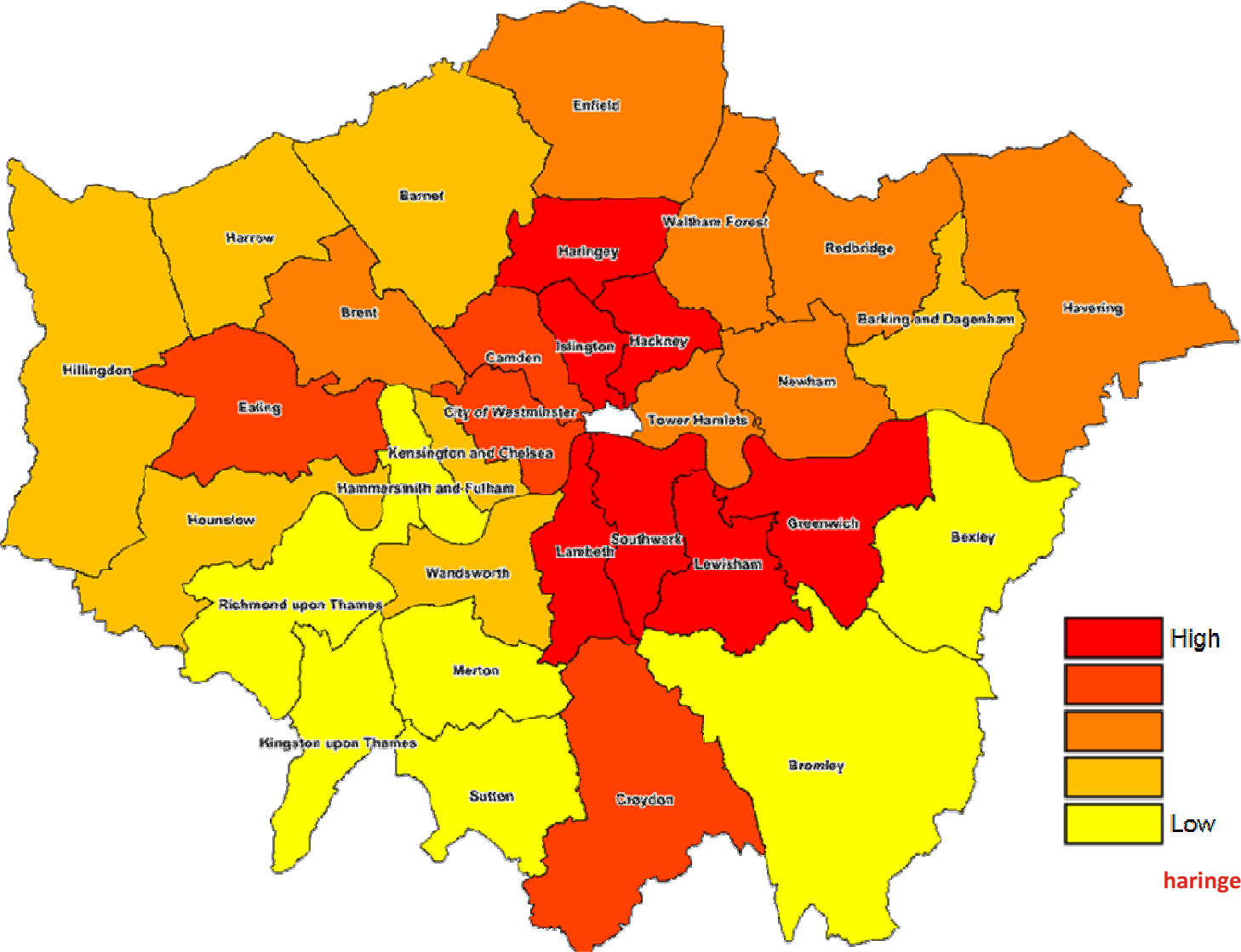


METROPOLITAN  
POLICE

TOTAL POLICING

**Haringey**  
LONDON

■ Haringey’s 118 Firearms offences in the past 12 months is the second most of all London boroughs. Newham is the only borough with a higher volume over this period.



# Drugs

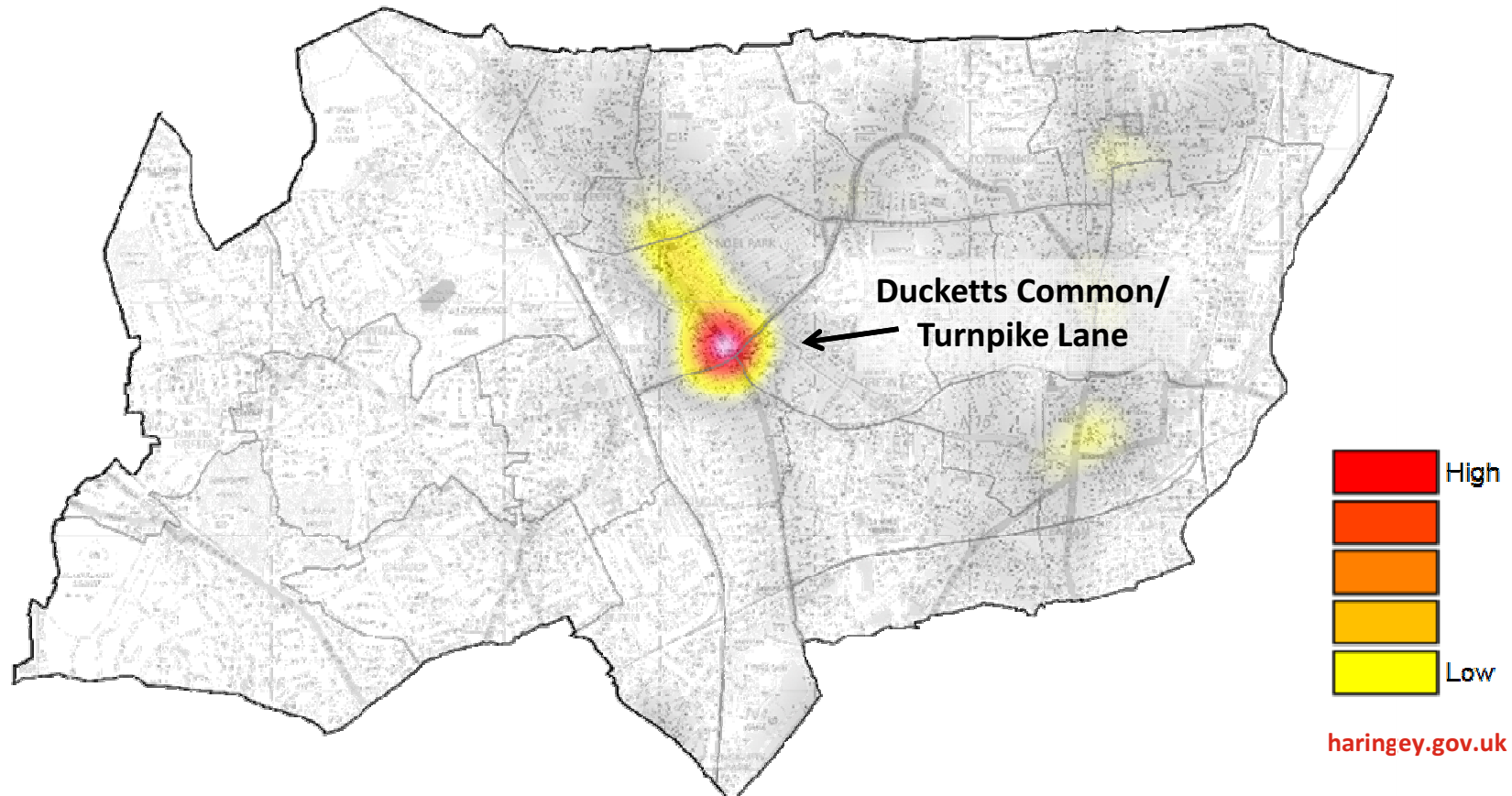


METROPOLITAN  
POLICE

TOTAL POLICING

**Haringey**  
LONDON

- 1,505 drug offences recorded across the borough in the past year.
- Of these, 92% are possession of drugs, mainly cannabis.
- The majority of drug offences in Haringey occur around Ducketts Common, Turnpike Lane and Wood Green High Road.



# Sexual Offences

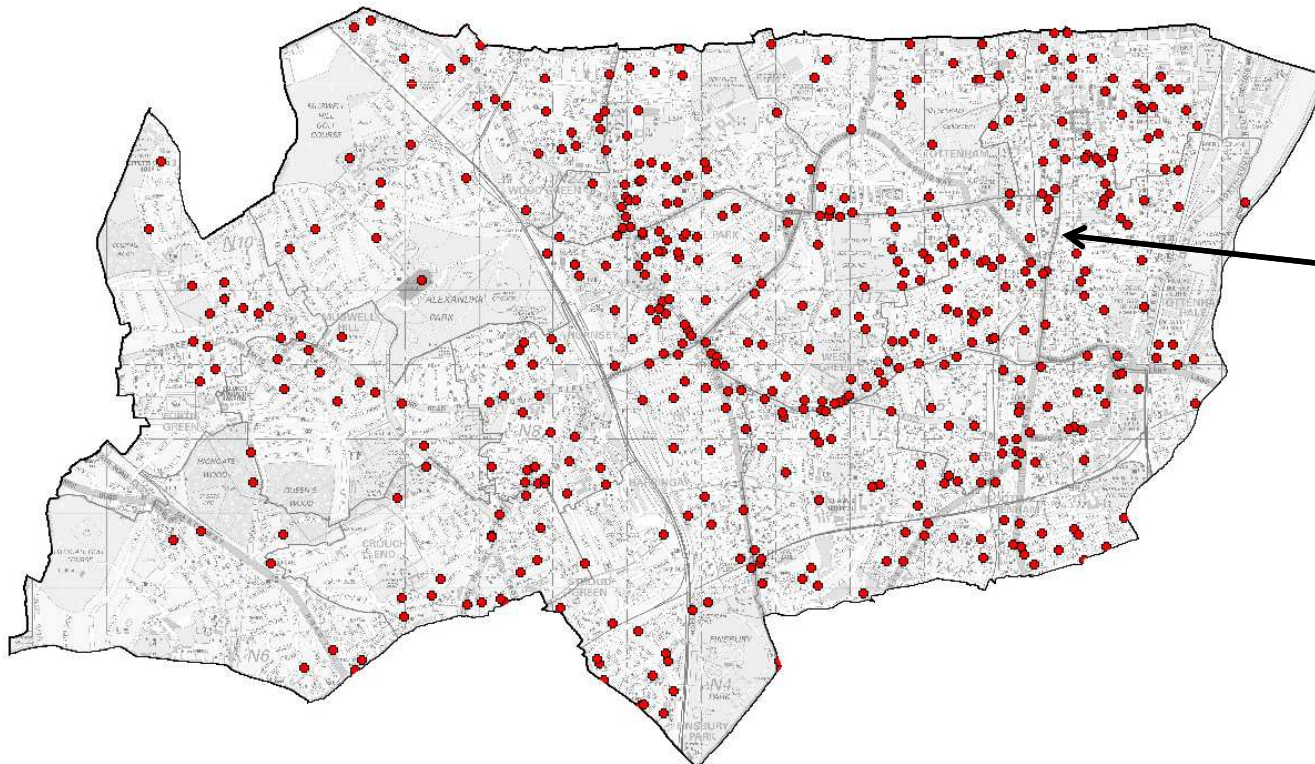


METROPOLITAN  
POLICE

TOTAL POLICING

**Haringey**  
LONDON

- 598 sexual offences across Haringey in the past 12-months. This is an increase of 8% as compare to the previous year.
- London has experienced an increase of 10.7% over this same period.
- 34 % of sexual offences in Haringey are classified in the most serious category of rape, which is similar to the London wide picture



- Offences are spread across entire borough, but with some clustering towards the East

# Burglary

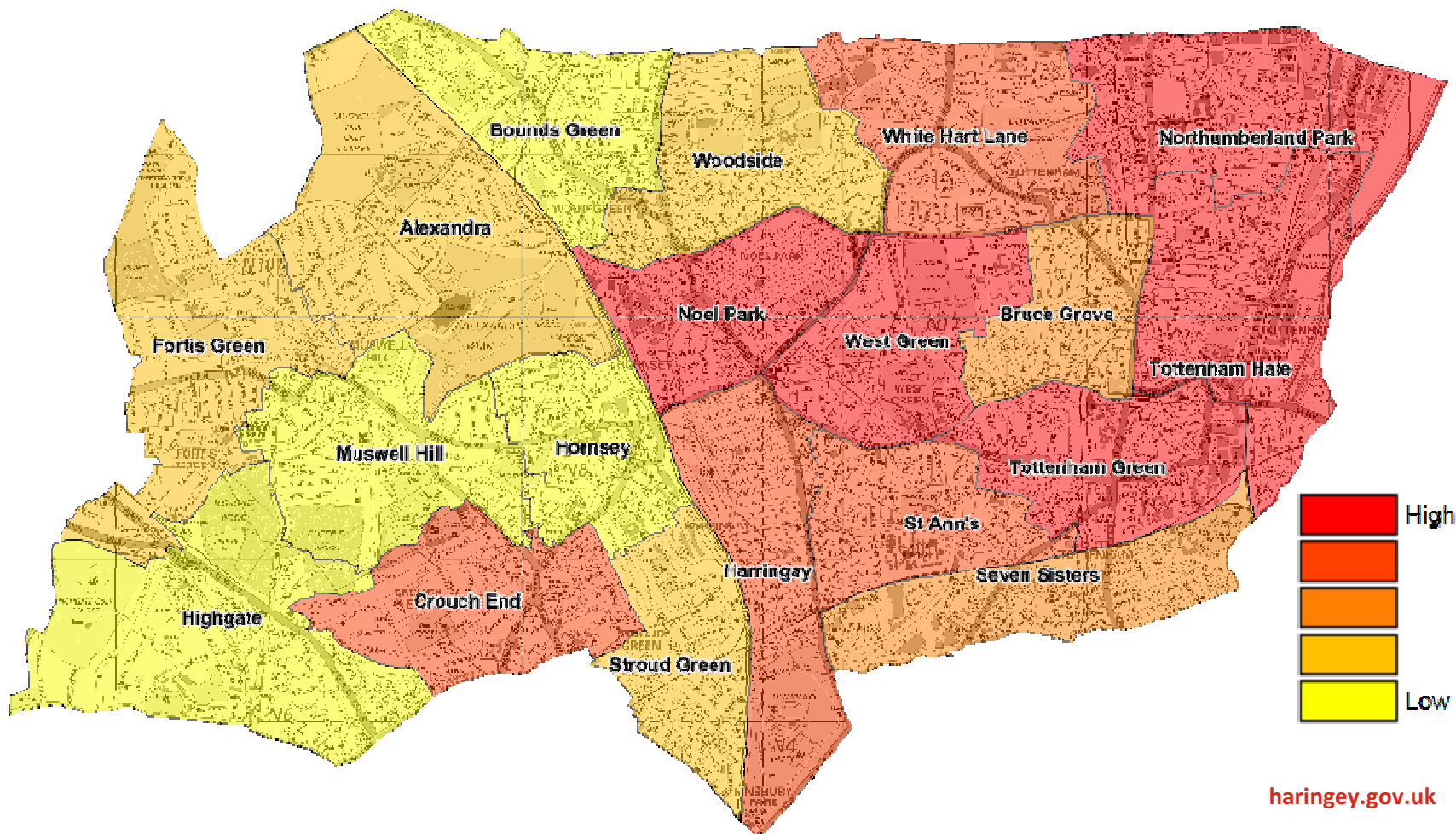


METROPOLITAN  
POLICE

TOTAL POLICING

**Haringey**  
LONDON

- Haringey has experienced a reduction in overall burglary of 8.5% in the past year. This includes a 6.0% reduction in domestic burglary and a 15.3% reduction in other burglary (including commercial)
- Haringey is outperforming other London boroughs, which have an average overall reduction of 3.0%



# Confidence

# Levels

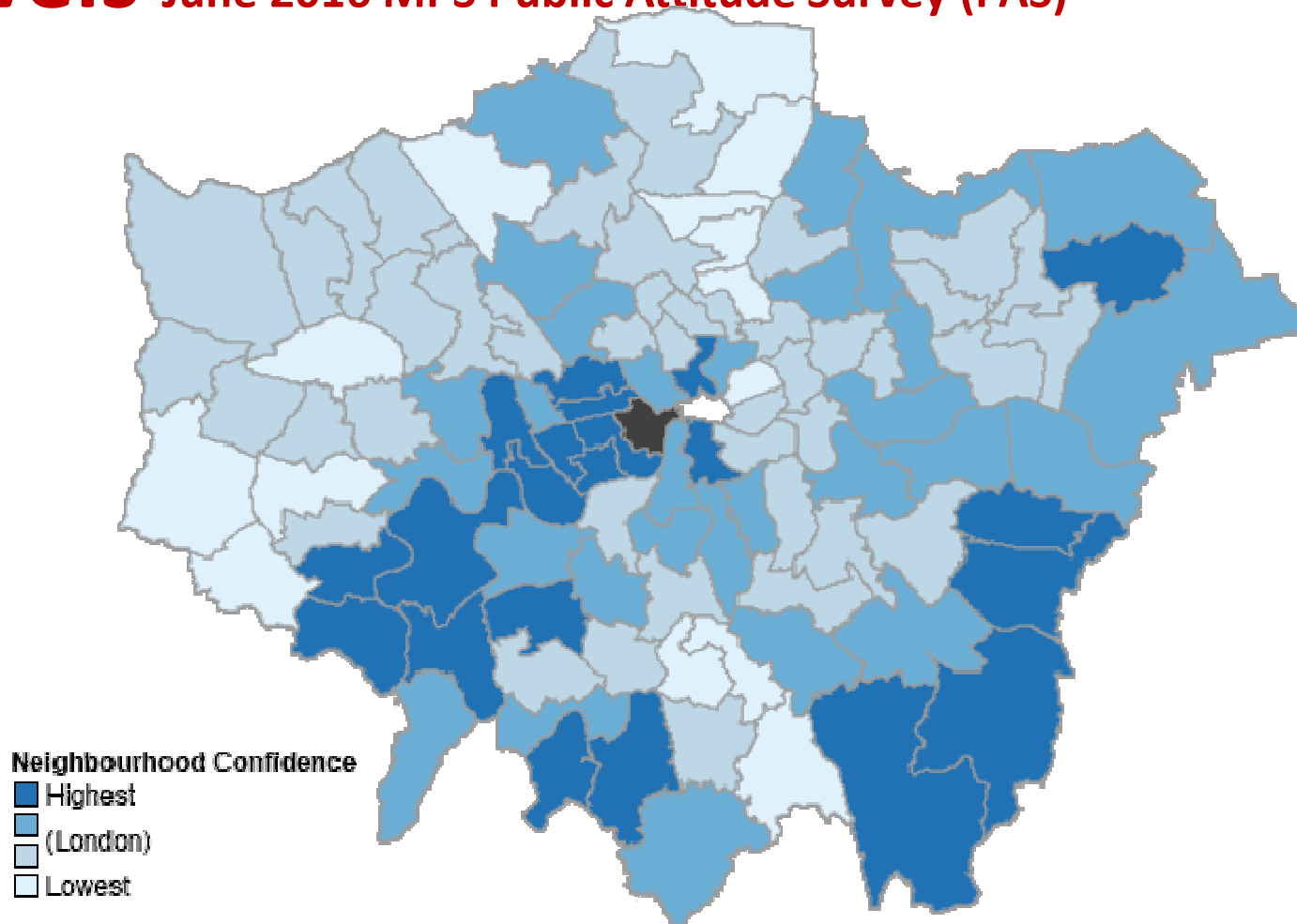
June 2016 MPS Public Attitude Survey (PAS)



METROPOLITAN  
POLICE

TOTAL POLICING

**Haringey**  
LONDON



Neighbourhood Confidence

- Highest
- (London)
- (London)
- Lowest

■ Haringey East and North have some of the lowest overall confidence levels in London, ranked 105<sup>th</sup> and 97<sup>th</sup> out of 108 London core neighbourhoods respectively.

■ In particular, these areas rank poorly for 'Feelings of Safety'

[haringey.gov.uk](http://haringey.gov.uk)



METROPOLITAN  
POLICE

TOTAL POLICING

**Haringey**  
LONDON

# Summary

- Several areas of positive performance
- Challenges include :
  - Responding to Hate Crime issues
  - Continuing to tackle vulnerability, including Domestic Abuse and Gangs
  - Improving Confidence levels